

September 2024

# Savannah Quilt Guild News

## President's Column

Kim Hayes

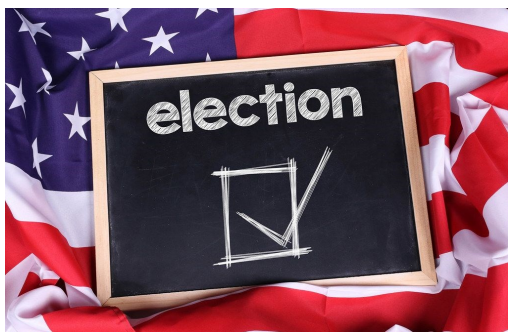
[president@savannahquiltguild.com](mailto:president@savannahquiltguild.com)

Hi Everyone,

I hope you are getting a lot of sewing done and were able to finish your entries for the Georgia Fair.

This is the time of year that we start planning for the election of next year's guild officers. If you are new to the guild, four members are asked ahead of time if they would like to serve as an officer for the following year: President, VP, Secretary, and Treasurer. I have asked Emily Robertson-Hood, Jennifer Farago and Lanette Edens to be the nominating committee for this year. I have also decided not to put my name in for next year. In October they will present the four potential officers for nomination and at the November meeting the guild will vote. Nominations are taken from the floor before voting.

Don't forget that at the September meeting, Sue Donitto will be having her yard sale. So come prepared to shop! Kim



Join us for our next meeting:

September 14th, 2024

**Southside Baptist Church**

5502 Skidaway Road

9:30 – 10:00 am - Sewcial Time

10:00 am – Meeting

Find it here:

<a href="#">Programs and Workshops</a>	2
<a href="#">Classes and BOM</a>	3
<a href="#">Things to do.....</a>	4
<a href="#">History of Quilting</a>	5
<a href="#">Tool Talk</a>	6
<a href="#">Community Outreach</a>	7
<a href="#">Minutes and Treasurer's Report</a>	8
<a href="#">Member Spotlight</a>	9

Remember to bring to our meeting:

- \* Wear your name tag
- \* Your Show and Share

## Needling News



Mitzi Crow	Sept 1st
Kathy Grant	Sept 2nd
Bethany Payne	Sept 13th
Ivey Grenell	Sept 17th
Patricia Murray	Sept 19th
Jennifer Prazak	Sept 20th
Bonnie Mandly	Sept 26th
Judy Saucerman	Sept 29th
Frances Stockton	Sept 29th

**Programs and Upcoming Events**  
**Peggy Caldwell, Vice President**  
[programs@savannahquiltguild.com](mailto:programs@savannahquiltguild.com)

Surface design will be the topic at our upcoming meeting. Sheryl St. Germain plans to demonstrate dying & printing on cloth using earth minerals. Our members will get to see items Sheryl has created with the various dying techniques she has used.

As usual, creativity will be a factor at our meeting! Mary Lou Cook, an American actress from the 1930's, perfectly defines it: "Creativity is inventing, experimenting, growing, taking risks, breaking rules, making mistakes and (something we too often forget) having fun!"

May your sewing days ahead be sunny & fun! Peggy

**After Meeting Workshops and Sew-Ons**  
**Cheryl Dingedine, [workshops@savannahquiltguild.com](mailto:workshops@savannahquiltguild.com)**

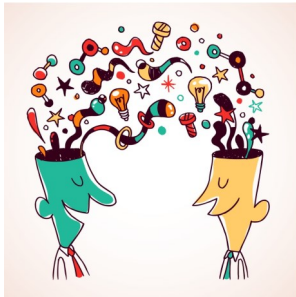
The September workshop will be slow stitching with Stephanie. I encourage everyone to sign up even if you know nothing about slow stitching, aren't quite sure exactly what it is, or what you can do with it. I'll be bringing some items that have been slow stitched in addition to Stephanie's examples. Also, I heard a rumor that one of the ornaments we will be creating in November's fun crafty workshop will be slow stitched!!! September's workshop will be a great time to learn the technique.

See you there

Cheryl



# Savannah Quilt Guild News



## Sewcial

The next Sewcial will be held in the September. Stay tuned for the details! Everyone is encouraged to share ideas for the next event.

**Cindy Ochoa**

912-222-8728/obleo31313@yahoo.com

## Upcoming Classes- Nationally Known Teachers

[classes@savannahquiltguild.com](mailto:classes@savannahquiltguild.com) **Judy Walker and Mary Bell Fuller**

### National Class for 2025

We are looking into possible instructors for our all-day Friday class for 2025. Theresa and Cindy have several names in front of them so stay tuned! More information will be available soon.

Judy Walker  
[jwalkero6@icloud.com](mailto:jwalkero6@icloud.com)  
912 547-3166

Mary Bell Fuller  
[mgbfrog@gmail.com](mailto:mgbfrog@gmail.com)  
912 441-6636

**BOM**

**Cat Block**

Click here for link: [BOM](#)



# Savannah Quilt Guild News

## Things to do this month...



### ◆ Friday Bee

Friday bee is four hours of sewing fun with ladies that love to quilt. The Sew Bee meets from 10 :00 am to 2:00 pm at Talahi Island Community Center. Contact Renee Christensen at [rip-pinrenee@gmail.com](mailto:rip-pinrenee@gmail.com) to be put on a list to join as a member.

### ◆ Zoom

Several quilt guild members meet each Monday at 11am for the Monday Quilting Zoom group. If you would like to join us please let me know and I will add you to the email list. We would love to see you on Monday mornings at 11 am.

Mary C. Bass : [mbcromartie@gmail.com](mailto:mbcromartie@gmail.com) or 912-604-7781

### ◆ Hand Appliqué Bee

Appliqué Bee  
Tuesday September 24th  
Center Parc Credit Union Community Room  
5698-A Ogeechee Rd Savannah  
This month will be a Sashiko workshop.



Judy Lindsey  
[judithalindsey@gmail.com](mailto:judithalindsey@gmail.com)  
352-263-6865

### ◆ Sew it Seams, Weekend Warriors

Members employed full or part-time meet the 3rd Saturday of each month from noon to 4 p.m. at the Talahi Community Center located at 532 Quarterman Drive. Please contact Regina Harris for further information and with any questions: [harrisrgm@yahoo.com](mailto:harrisrgm@yahoo.com) or 203-837-0322.

### ◆ Modern Bee

The Guild's Modern bee is a monthly gathering of everyone interested in modern quilting. It meets on the third Wednesday of the month at the Talahi Island Community Center (532 Quarterman Dr.) 1-4 in the afternoon. Bring your sewing machine and participate in a workshop on a technique used in modern quilting. Specific topics are regularly posted on the website and sent to members.

For further information contact:

Rita Richey ([rrichey@wayne.edu](mailto:rrichey@wayne.edu)) Carol Richards ([carolrichards@ymail.com](mailto:carolrichards@ymail.com))

## Quilting History

Cindy Wallace, contributor

I hope many of you can attend the Cummer Museum quilt exhibit in downtown Jacksonville, FL. It runs Tues, July 9 to Sun, Sept 29, 2024. The quilt exhibit entitled *Fabric of a Nation: American Quilt Stories from the Museum of Fine Arts, Boston*, will blow you away. It is a stunning and thought-provoking exhibition, and the sculpted gardens are beautiful as they overlook the St. John's River. It also allowed me to see one of my favorite historic quilts in person. I went back to study it several times during my visit. So, keeping in mind that the entire exhibit is breathtaking, which one did I find so fascinating and why?

Harriet Powers (1837-1910, maiden name unknown) was born into plantation slavery and became an expert needleworker at an early age. She lived in rural northeast Georgia – near Athens and part of the Plantation Belt – that brings this story close to home doesn't it? Harriet used persimmon seeds instead of shell buttons when mending the family's clothing. She made quilts about local legends, astronomical events and about Bible stories. Harriet became an award-winning quilter, who stitched at least five large quilts and promoted her own artwork. She and her large family were freed after the Civil War and emancipation but continued to live near the same area where they had been enslaved. Only two of her story-quilts are known to have survived. They are the *Bible Quilt 1886* (purchased by Oneita Virginia Smith, an art teacher, for \$5.00) and *Pictorial Quilt 1898*. Both of these quilts are applique work – a method reserved to make the best quilts showing the needleworker's skills. This was my mother's favorite technique and she was a master too, using the tiniest almost invisible stitches. Alas, it's a gene I did not inherit. Harriet's quilts are considered among the finest examples of 1800's Southern quilting, and I got to stand before one of them and breathe in the songs her quilt sings: the *Pictorial Quilt 1898*, which took her three years to make. Harriet acquired a sewing machine by 1878 and there is bold evidence of both hand stitching and machine work in *Pictorial Quilt*. The blocks in this quilt are a mixture of religion and folktales. Often, as a way to remember something important she turned it into a picture-story in cloth. This was akin to a religious act for Harriet, like singing an emotionally moving spiritual.

When you study *Pictorial Quilt* the figures seem to be in constant motion. They wave, walk, kneel, and blow trumpets. There are stripes, polka dots, pointed stars etc., that add movement to the blocks. They are created very much in the style of the male cloth-workers of Dahomey (now Benin) in West Africa who wore their appliqued costumes in religious dances. Two of the weather blocks depict the Dark Day of 1780 and the Falling of the Stars in 1833 – these happened before she was born but were often described by African-American ministers; these were real events interpreting the end of the world and judgment day. See second from the left, top and second from the left, bottom. She experienced two of the four weather-story blocks: the Red Light Night of 1846 and the Cold Thursday of February 1895. See bottom left corner and the one next to it. Then, look at the third from the left bottom block. See the ticking clock? In both European and African-American folklore, clocks were related to bad luck and death. Black Georgians often placed a clock on a grave to wake the dead on Judgment Day. You can still see this occasionally in Laurel Grove Cemetery South, Savannah. Lastly, look at the middle left block to see Jonah going overboard into the whale's mouth. Those are stylized turtles on either side of the whale. Harriet Power's quilts are like crossroads where the best ideas of multiple cultures intersect. I love it that I can revisit each block in books and digitally where I can contemplate the powerful story each block tells. I finally got to stand in front of the real *Pictorial Quilt* - powerful, exciting and beautiful every stitch of the way.



## Tool Talk By Cat Allard

### Sewing Machine Needles

Whether you have a top-of-the-line sewing machine or an economy model, the most important tool used is the sewing machine needle.

In the last few decades, the new owner of a home sewing machine would most likely find their machine equipped from the factory with a 'Universal' needle. A Universal needle is not as rounded as a ball-point, but more rounded than a 'Sharp.' The intent of the Universal needle is to be able to sew on the widest possible variety of fabrics with a single needle. Your results will be better when you match a specific needle to the task at hand whenever possible.

What's on the package? The general needle system in use for household sewing machines is the system 130/705 H. The international system designation is also 130/705 H (H = Hohlkehle in German, meaning 'with scarf').

Household needles of system 130/705 H all have a flattened shank for perfect positioning of the needle in the needle bar and in relation to the point of the hook. This system fits nearly every machine manufactured for home use.

In the United States, we commonly see needles labeled with two measurements separated by a slash. The first number is the old Singer needle sizing standard, the second number is the NM (metric measurement) designation. A 12/80 needle is simply the same needle measured by two different systems.

Use the smallest needle that will work. If your needle is larger than it needs to be, you're not only inflicting more abuse on your fabric than necessary, but you are causing more wear on the thread. The more extra room the thread will flop around in the eye, the harder it is on the thread.

Change your needle often. A needle that has been used for 8 hours of actual stitching has penetrated fabric many thousands of times, depending on how fast you are running your machine. The tiny tip of that needle eventually wears out. A dull needle damages fabric and causes skipped stitches, broken thread, and lots of frustration. **WHEN IN DOUBT, SWAP IT OUT!**

Here are some suggestions on use from Schmetz needles. They will also apply to other brands.

**Universal:** Slightly rounded tip. Good general-purpose needle for numerous fabrics including woven and knits.

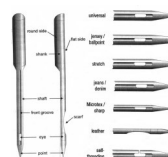
**Quilting:** Special taper to slightly rounded tip. Made especially for piecing and quilting. Tapered design helps prevent skipped stitches.

**Top Stitch:** Extra long eye. Produces perfectly straight lines when used with a straight stitch plate.

**Jersey (Ball Point):** Medium ball (rounded) point. For knits and some stretch fabric. The ball point does not damage or break fibers of knit fabric.

**Microtex:** A very slim acute point. For microfibers, polyester, silk, foils, artificial leather, and coated materials. The very thin point creates lovely topstitching and straight stitches for quilt piecing.

Other specialty needles include Jeans, Metallic, Embroidery, Leather, Hemstitch and Double Eye.



# Savannah Quilt Guild News

## Community Outreach - Brighten the world of a sick child

Jan Howard, [sunfish2@att.net](mailto:sunfish2@att.net) Debbie Whiteway, [wahoo@gmail.com](mailto:wahoo@gmail.com)  
Francis Stockton, [francis.stockton@att.net](mailto:francis.stockton@att.net)



Memorial NICU is always in need of hats/caps for the babies. The very small preemies cannot wear them, but as they grow and the larger children in there do use them. They may be used in the ISN, Intermediate Special Care Nursery, also.

I delivered 35 caps, 3 nursing covers and 78 hearts to Memorial Hospital this month. Thank you to all that participated! If you have nursing cover kits at home that you have not made yet, please bring them to our next meeting. I am trying to finish up delivery of these. Jan

**Project  
Linus**

Savannah, GA /  
Hilton Head, SC Chapter

Project Linus is a non-profit organization that provides handmade blankets to children ages 0-18 in the U.S. who are seriously ill, traumatized or in need. The Project Linus website offers patterns, links, information about volunteering and donating, and how to join a monthly Zoom meeting.

Questions? Email [elliegrix@gmail.com](mailto:elliegrix@gmail.com)

If you would like to get participate, you may contact Ellie Grix, who is the local chapter coordinator. Ellie is a member of the guild and is at most meetings, or can be reached at

(573) 631-2571.

## Everyone Loves the Take-It Table!

Do you have an over abundance of sewing/crafting supplies? Are you down-sizing, clearing the clutter, or making room for new items? Bring your unwanted items (crafting/sewing **only**, please) to put on the Take It Table. Your item might be someone's treasure! **At the end of the meeting please reclaim any of your items that remain on the table.**

# Savannah Quilt Guild News

## Meeting Minutes



Meeting Minutes for August : [Click here to view](#)

## Treasurer's Report

Jan Howard, [treasurer@savannahquiltguild.com](mailto:treasurer@savannahquiltguild.com)



**Full Treasurer's Report:** [Click here to view](#)

### Guild Operating Fund

Beginning balance	5,510.61
Service Charge	(.90)
Fabric donations	4.00
Pillowcase Fabric	(83.27)
Lanette Edens Bags for Courage cording	(41.53)
Lanette Edens Bags for Courage fabric and labels	(112.66)
<b>Balance on hand 8/20/2024</b>	<b>5,286.25</b>

**Note:** If you are making payments using Venmo, our name for Venmo payments is [sqgpay@savannahquiltguild.com](mailto:sqgpay@savannahquiltguild.com). The treasurer's name (Jan Howard) may show up during the transaction but rest assured that the money goes directly to the guild bank account.



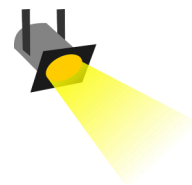
### *SQG Website News*

If anyone has issues logging on to the website, please contact  
Theresa Sapp at [theresasapp@aol.com](mailto:theresasapp@aol.com)  
We hope you enjoy exploring your website!



## Member Spotlight August

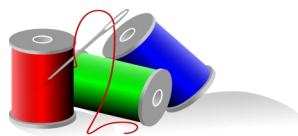
By Deb Brown



Please join me in welcoming two new members, Kathryn Finney and Desa Ballard. Read more about their quilting journeys below.

Kathryn Finney, a 5<sup>th</sup> generation quilter, is originally from Nashville, Tennessee. She moved to Bloomingdale, GA nearly a year ago to escape shoveling the snow in Virginia. After frequently visiting her college friend for many years who lived in the Savannah area, she fell in love with the city and decided to retire here. Kathryn is a retired middle school music and band director with a 28-year tenure. She also played in the Paduka Symphony Orchestra while living in Kentucky. Kathryn's quilting journey began in 1997 when she had the desire to make a double wedding ring quilt. She took beginner quilting classes, bought fabric and other quilting essentials. Panicking when she couldn't thread the sewing machine, she worked her way through it and made her first quilt that was a double 9 patch quilt, her most favorite quilt to this day. Kathryn is a huge fan of the quilt pattern designer and author, Bonnie Hunter. She has made over 10 of Bonnie Hunter's mystery quilts. Kathryn has nearly all of Bonnie's Scrappy Goodness books and even spent a week at the Bonnie's Quiltville Inn on a quilting retreat, gaining 12 new quilting friends. Kathryn describes her fabric stash as an incredible collection of neutrals, an overflowing cabinet of batiks, lots of Christmas fabrics, red fabrics and those with music motifs. She sews on a Bernina 780 with another Bernina sewing machine as a backup/travel machine. While in Virginia, she entered her phenomenal quilts in the guild's (non-juried) quilt show. She is currently working on one of Bonnie Hunter's patterns, "Indigo Way", enjoying practicing free motion machine quilting and hand Sashiko stitching. She also enjoys making 3D illusion quilts.

Desa Ballard was born in Augusta, GA. When her parents moved her to Columbia, South Carolina, she left her high school sweetheart behind. Life moved on and she graduated from law school. Practicing law in a firm of all male attorneys, she felt like a square peg in a round hole – she just didn't fit in. So, she successfully started her own law firm that now serves physicians and other attorneys. Desa reconnected with and married her high school sweetheart several years ago. Four years ago, the newlyweds chose Savannah to continue their lives together as a compromise between Florida and South Carolina. She still practices law in South Carolina although she works remotely. Desa has been quilting for over 20 years, finding it to be a form of meditation. Her first quilt was the Triple Irish Chain, an Eleanor Burns quilt pattern. She took quilting classes at the technical college in South Carolina and quilting became her passion. Because of her work schedule, she has made about 10 quilts, giving most of them away. Her fabric stash contains lots of bright fabrics that she has ordered mostly from online fabric shops. She sews on a Bernina sewing machine and still has her 1964 Featherweight sewing machine that was given to her for her birthday when she was in the 5<sup>th</sup> grade. It still very well works today. Desa is the only quilter in her family. She enjoys going to quilt shows and taking quilting classes. She is currently learning the decorative stitches on her sewing machine and is looking forward to conquering her fear of paper piecing. Learn more about Desa at [Desaballard.com](http://Desaballard.com).





Officers and Committee Chairs - January through December 2024

President - Kim Hayes

Sewcial - Cindy Ochoa

Vice President - Peggy Caldwell

Retreat - Lanette Edens

Secretary - Joanne Simpson

Newsletter - Joanne Simpson

Treasurer - Jan Howard

Website - Theresa Sapp &

Renee Christensen

Membership - Lisa Sims-Stevens

Friday Bee - Renee Christensen

Classes - Judy Walker & Mary Bell Fuller

Community Outreach

- Nursing Covers - Jan Howard

Workshops- Cheryl Dingleline

Community Outreach

- Pillowcases - Debbie Whiteway

Sunshine Chairman - TBA

Frances Stockton

To contact Officers and Committee Chairs

Click here



[Contact Us](#)

The deadline for the Newsletter is the 21st of the month.

Please email your info to: Wertser44701124@comcast.net (Joanne Simpson)